

## TRAILS

### HIKE-BIKE TRAIL

Run, bike or walk 8.5 miles around picturesque Kent Lake on our paved hike-bike trail. A 3.4 mile trail extends north from this loop and connects to the Village of Milford. Dogs are allowed on paved hike-bike trails. They must be on a 6-foot leash at all times.

### NATURE TRAILS

Discover some of Michigan's rarest and most diverse wetland ecosystems while you trek up to 7 miles beyond the river.

### EQUESTRIAN TRAILS

Individuals with their own horses may use 18 miles of marked equestrian trails. Please contact the Park Office to obtain a release waiver and bridle tag prior to arrival.

### MOUNTAIN BIKE TRAIL

Steer your mountain bike down 2 miles of unpaved connecting trail. Trail begins at the Park Entrance and ends at Proud Lake State Recreation Area.

## AMENITIES & ACTIVITIES

### PARK ACCESSIBILITY

The Huron-Clinton Metroparks is committed to providing an accessible environment for every visitor. We've recently embarked on a long-term plan to bring more accessible features to our parks than ever before. More details at metroparks.com.

**Maple Beach Playground:** We've exceeded ADA guidelines with a new playground designed using universal design principles.

**Maple Beach Walkways & Restroom:** Our new restroom building and beach access paths now meet ADA guidelines.

**Hike-Bike Trail:** Trailhead kiosks are set in concrete pads to make trail information more accessible. Associated bike repair stations double as wheelchair repair stations.

**Picnic Shelter Grills & Tables:** Picnic shelters throughout the Metroparks are being updated with accessible picnic tables and grills that allow for unobstructed movement around them.

### BEACHES

Take a dip at either Martindale Beach or Maple Beach. They're ideal settings for a day of fun and sunshine in the great outdoors. Beaches open on Memorial Day weekend each year.

### FISHING

Grab your gear and cast a line out at either Kent Lake or the Huron River. Participants over the age of 17 must have a current state fishing license.

### ISLAND QUEEN

Hop aboard the Island Queen III for a leisurely cruise around Kent Lake. Public rides and private charters available during summer.

### PLAYGROUNDS

Come play at one of several playgrounds located around the park.

### SPLASH 'N' BLAST

Wade over to Martindale Beach to enjoy 240-foot waterslides and a sprayground outfitted with cannons, palm trees and more.

### GOLF

Swing by for a round at our scenic, par 71 course. Reserve your tee time at golf.metroparks.com.

### DISC GOLF

Spin through 36 holes at our challenging Black Locust disc golf course or catch our professional Toboggan course during tournament season.

### BOAT RENTALS

Enjoy a day exploring Kent Lake's waters and shorelines by watercraft. Canoes, kayaks, stand-up paddleboards, row boats, paddleboats and character pedal boats are available for rent.

### WINTER ACTIVITIES

Discover a world of winter with activities such as cross-country skiing, sledding, snowboarding, tobogganing, ice fishing, snowshoeing and more. Winter activity map available online at metroparks.com.

## PLAN YOUR EVENT WITH US

Looking for a unique venue to host your special event? We have a variety of indoor and outdoor spaces available for any occasion. Weddings, concerts, field trips, birthdays, family reunions and everything in between.

More details at metroparks.com.



# KENSINGTON PARK MAP



## NATURE CENTER

(810) 227-8917

Monday: 1 p.m. - 5 p.m.

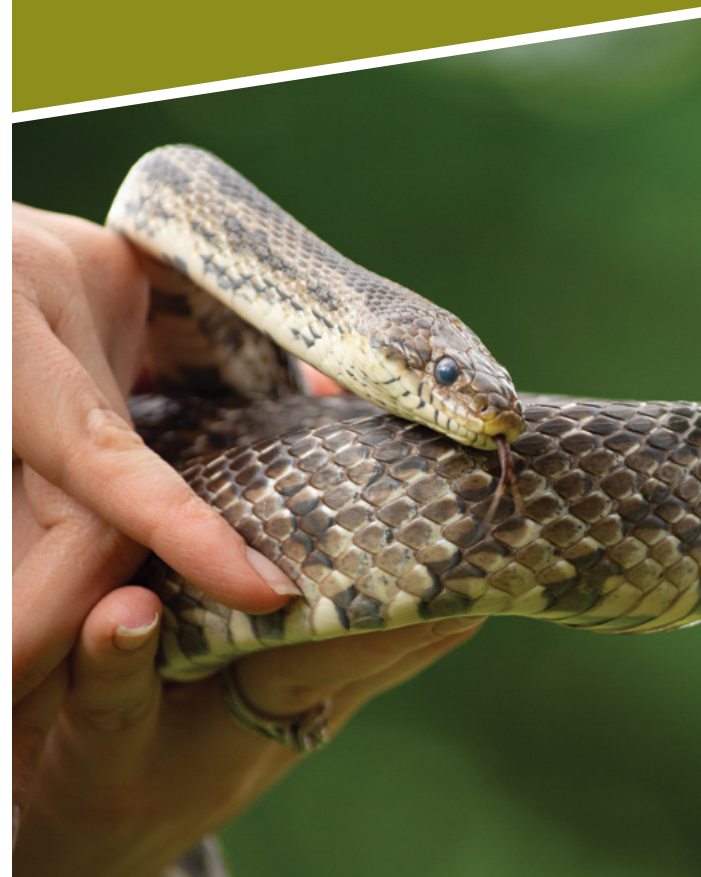
Tuesday - Sunday: 10 a.m. - 5 p.m.



Get in touch with the world around you at the Nature Center. Find educational exhibits and live animal displays to enhance your understanding and enjoyment of the ecosystems, wildlife, and history of the park. Explore seven miles of nature trails around the Nature Center, a must visit for birders!

### FIELD TRIPS

School, scout or community groups can experience Kensington Metropark, with customizable on-site and in-school programs.



## FARM CENTER

(248) 684-8632

March - October: 9 a.m. - 6 p.m. daily

November - February: 9 a.m. - 4 p.m. daily



Meet farm animals and get a glimpse of rural life at the Farm Center. Take in the sights, smells and sounds of life on the farm as you interact with live farm animals like chickens, sheep, goats, cattle and draft horses. Seasonal public programming is available year-round, including festivals, maple sugaring, sheep shearing and you-pick pumpkin patch.

### WAGON RIDES

Take a weekend hayride (or sleigh ride) through scenic farm and forest land along the Huron River. Private charters and bonfire rentals are also available daytime and evenings.

### FIELD TRIPS

School, scout or community groups can experience the farm with customizable on-site programs.

### ATTRACTIONS

Our Farm Center is home to a host of historic and educational experiences like the Kensington Living History Village, a restored 150-year-old barn, Kid's Cottage, stone labyrinth and much more.

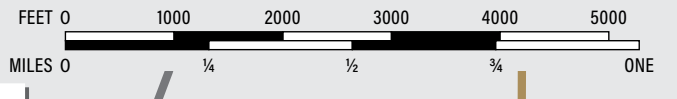




# KENSINGTON METROPARK

4570 Huron River Parkway, Milford, MI 48380  
 Park Office & Police HQ: (810) 227-8910 | Farm Center: (248) 684-8632 | Golf Course/Ski Center: (810) 227-8916  
 Nature Center: (810) 227-8917

- |   |   |   |   |
|---|---|---|---|
| <ul style="list-style-type: none"> <li> BASEBALL DIAMOND</li> <li> BEACH</li> <li> BOAT LAUNCH</li> <li> BOAT RENTAL</li> <li> CAMPING</li> <li> CANOE/KAYAK LAUNCH</li> <li> CONCESSIONS</li> <li> CROSS-COUNTRY SKIING</li> <li> DISC GOLF</li> <li> FARM CENTER</li> <li> GOLF</li> <li> HANDPUMP WELL</li> <li> HIKING</li> <li> EQUESTRIAN</li> <li> MOUNTAIN BIKING</li> <li> NATURE CENTER</li> <li> NO BIKING</li> <li> NO DOGS</li> <li> NO FEEDING ANIMALS</li> </ul> | <ul style="list-style-type: none"> <li> NO FISHING</li> <li> NO RUNNING</li> <li> PLAYGROUND</li> <li> RAIN SHELTER</li> <li> REPAIR STATION</li> <li> RESTROOMS</li> <li> SLEDDING</li> <li> SNOWBOARDING</li> <li> SPLASH 'N' BLAST</li> <li> TOBOGGANING</li> <li> TOLL BOOTH</li> <li> TRAILHEAD</li> <li> VAULT TOILETS</li> <li> VIEWING AREA</li> <li> VOLLEYBALL COURT</li> <li> WATERSLIDE</li> <li> WIND SURFING</li> </ul> | <b>PICNIC SHELTERS</b> <ul style="list-style-type: none"> <li><b>A</b> EAST BOAT LAUNCH</li> <li><b>B</b> SOUTH MARTINDALE</li> <li><b>C</b> NORTH MARTINDALE</li> <li><b>D</b> WINDFALL HILL</li> <li><b>E</b> PLAYFIELD NORTH</li> <li><b>F</b> PLAYFIELD EAST</li> <li><b>G</b> PLAYFIELD CENTER</li> <li><b>H</b> PLAYFIELD WEST</li> <li><b>I</b> POSSUM HOLLOW</li> <li><b>J</b> ORCHARD</li> <li><b>K</b> SPRING HILL</li> <li><b>L</b> BAYWOODS</li> <li><b>M</b> NORTH HICKORY RIDGE</li> <li><b>N</b> SOUTH HICKORY RIDGE</li> <li><b>O</b> WEST BOAT LAUNCH</li> </ul> | <b>ROADS AND TRAILS</b> <ul style="list-style-type: none"> <li> ROADS &amp; SIDEWALKS</li> <li> PAVED HIKE-BIKE TRAIL</li> <li> UNPAVED</li> <li> RUSTIC HIKE-BIKE TRAIL</li> <li> MOUNTAIN BIKING TRAIL</li> <li> ALTERNATE ROUTE</li> <li> HURON RIVER WATER TRAIL</li> </ul> |
|   |   | <b>NATURE TRAILS</b> <ul style="list-style-type: none"> <li> CHICKADEE TRAIL - 2 MILES</li> <li> DEER RUN TRAIL - 1½ MILES</li> <li> ASPEN TRAIL - 1½ MILES</li> <li> WILDWING TRAIL - 1¼ MILES</li> </ul>  | <b>EQUESTRIAN TRAILS</b> <ul style="list-style-type: none"> <li> NORTH TRAIL - 3¼ MILES ROUND TRIP</li> <li> EAST TRAIL - 3½ MILES</li> <li> SOUTH TRAIL - 11 MILES ROUND TRIP</li> <li> WEST TRAIL - 9 MILES ROUND TRIP</li> </ul>   |



**HURON-CLINTON METROPARKS**  
 13000 High Ridge Drive, Brighton, MI 48114-9058  
 Phone: (810) 227-2757 or 1-800-47-PARKS  
[metroparks.com](http://metroparks.com)

**STAY CONNECTED**  
 Join our email list to receive updates on parks and activities.



**BOARD OF COMMISSIONERS**

Kurt L. Heise Governor Appointee	Robert W. Marans Washtenaw County	Timothy J. McCarthy Governor Appointee
Bernard Parker Wayne County	John Paul Rea Macomb County	Jaye Quadrozzi Oakland County
Steven E. Williams Livingston County		

**EXECUTIVE DIRECTOR**  
 Amy McMillan

**ABOUT YOUR HURON-CLINTON METROPARKS**  
 One of America's premier metropolitan park systems, the Huron-Clinton Metroparks have served the people of Southeast Michigan since 1940. The Metroparks are made up of 13 parks spanning over 25,000 acres along the Huron and Clinton river systems. The Metroparks provide 365-day access to outdoor recreation and educational opportunities.

**Delhi • Dexter-Huron • Hudson Mills • Huron Meadows • Indian Springs • Kensington • Lake Erie • Lake St. Clair • Lower Huron • Oakwoods • Stony Creek • Willow • Wolcott Mill**

**VOLUNTEER OPPORTUNITIES**  
 Want to make a difference at your Metroparks? We offer volunteer opportunities throughout the year. Visit [metroparks.com/volunteer](http://metroparks.com/volunteer) for more information.

**METROPARK SAFETY**

- Please report any accident or unsafe condition to a park employee.
- Personal protective equipment is recommended (life jacket, helmet, etc).
- Dispose of hot coals in bins marked "Hot Coals" only. If not available, contact a park employee.
- Read and adhere to trail rules and regulations.
- Dogs must be on a 6-foot leash.